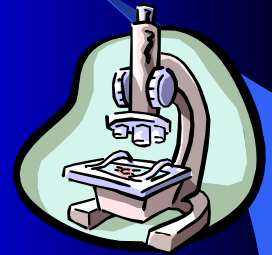


STATUS OF CLASSICAL SWINE FEVER PROJECT IN JAMAICA

INTRODUCTION

- Activities started
- Progressing based on new schedule
- Hopeful completion by April 2004



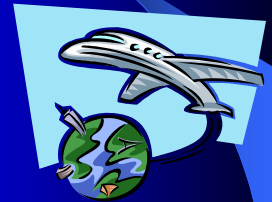
MAIN DIRECTION

- Educate pig farmers.
- Educate veterinarians.
- Educate public health/meat inspectors.



EMPHASIS PLACED ON

- Diagnosis
- Clinical symptoms
- Post-mortem signs
- Control and preventative strategies.



SEMINARS CONDUCTED

- Two (2) Seminars for veterinarians of the Jamaica Veterinary Medical Association (JVMA).
- 1st Regional meeting for pig farmers and members of the Jamaica Pig Farmers Association (JPFA) – Jan 21, 2004.
- 1st Training seminar for meat inspectors – Jan 29, 2004.
- 2nd Training Seminar for meat inspectors – Feb 16, 2004.

PLANNED SEMINARS

- Public Health/Meat Inspectors' Seminar (Central Region) – March 8, 2004.
- Pig Farmers Association Seminar (Eastern Region) – March 10, 2004.
- Pig Farmers Association Seminar (Western Region) – March 17, 2004.
- Pig Farmers Association Seminar (Central Region) – March 24, 2004.

SIMULATION EXERCISE

Simulation Exercise for CSF planned for April 2004.

SUPPLIES/EQUIPMENT RECEIVED

- 20,000 colored brochures.
- Colored posters.
- Multimedia Projector.

Jamaica is free from Classical Swine Fever.

Jamaica is a member country of the OIE

MAIN RISK FACTORS

- Possibility of Introduction of CSF via meat and meat products from infected countries.
- Entry via international garbage from ships and aircrafts.

FIRST LINE OF DEFENCE

- Airport and Seaport Surveillance
- Proper handling of disposal of international garbage.

THANK YOU !!!